

Mastercam X⁶

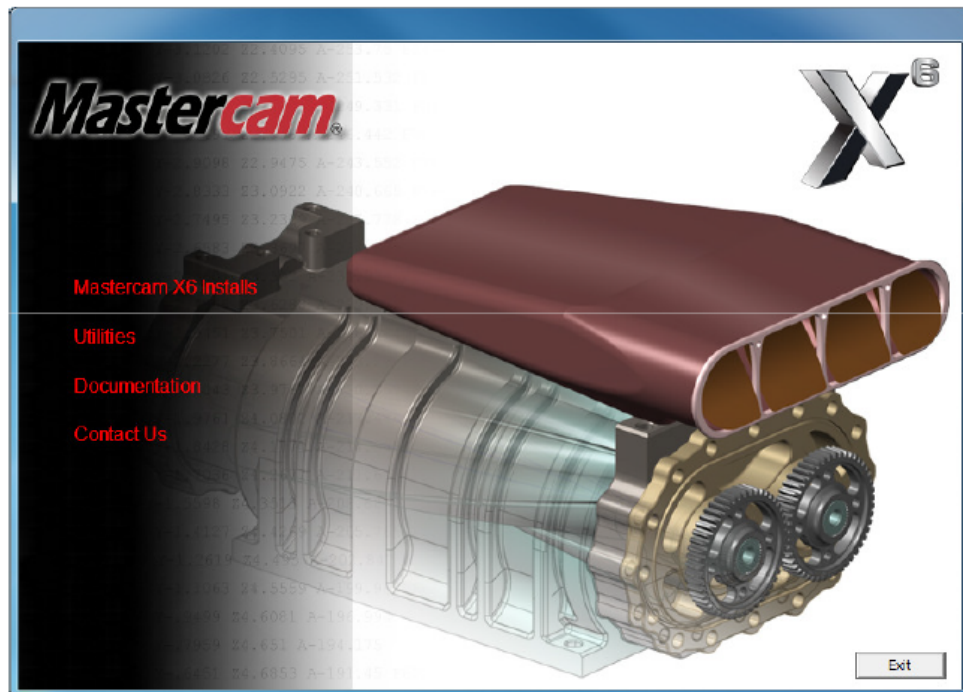
Installation, Migration and Updates



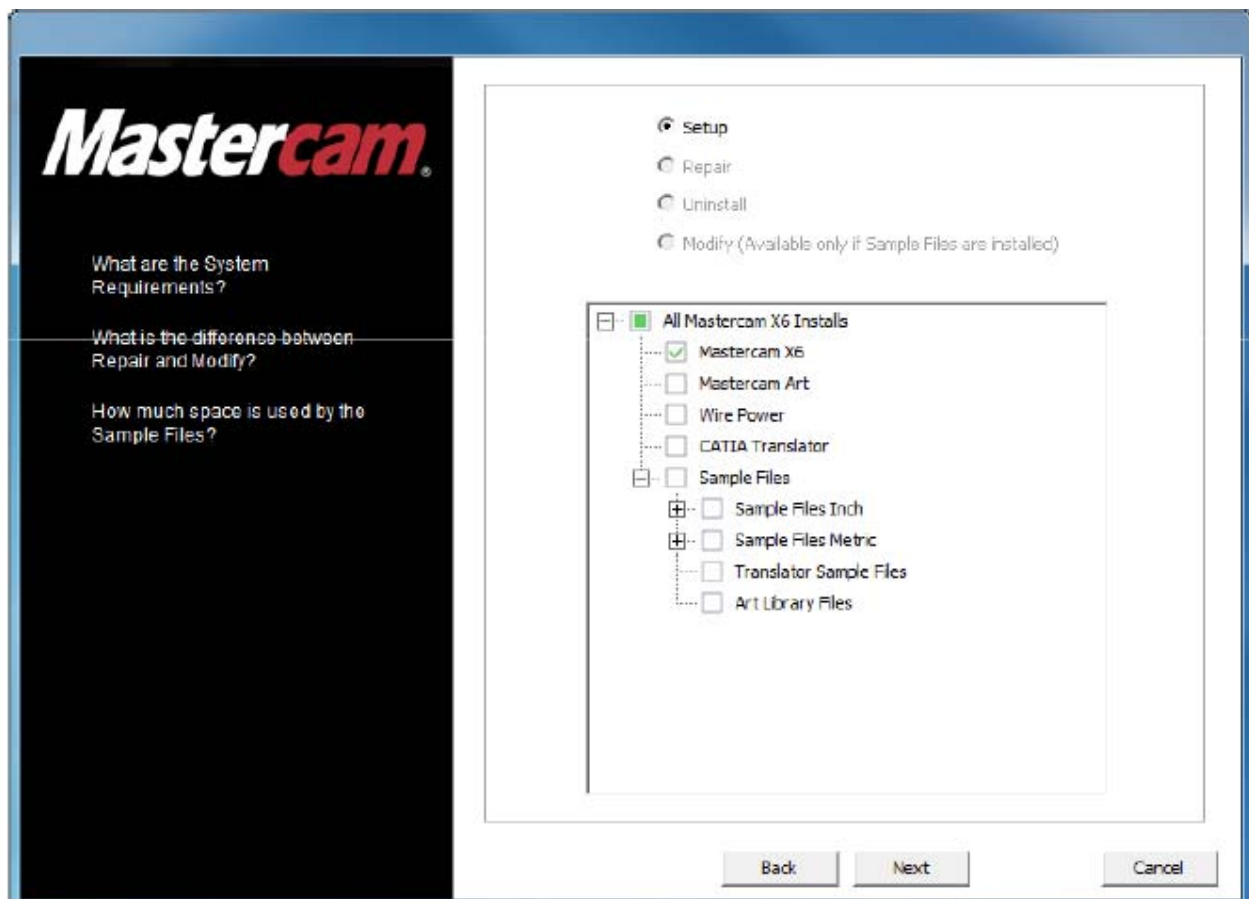
Getting your X6 installation up and running!

Installation

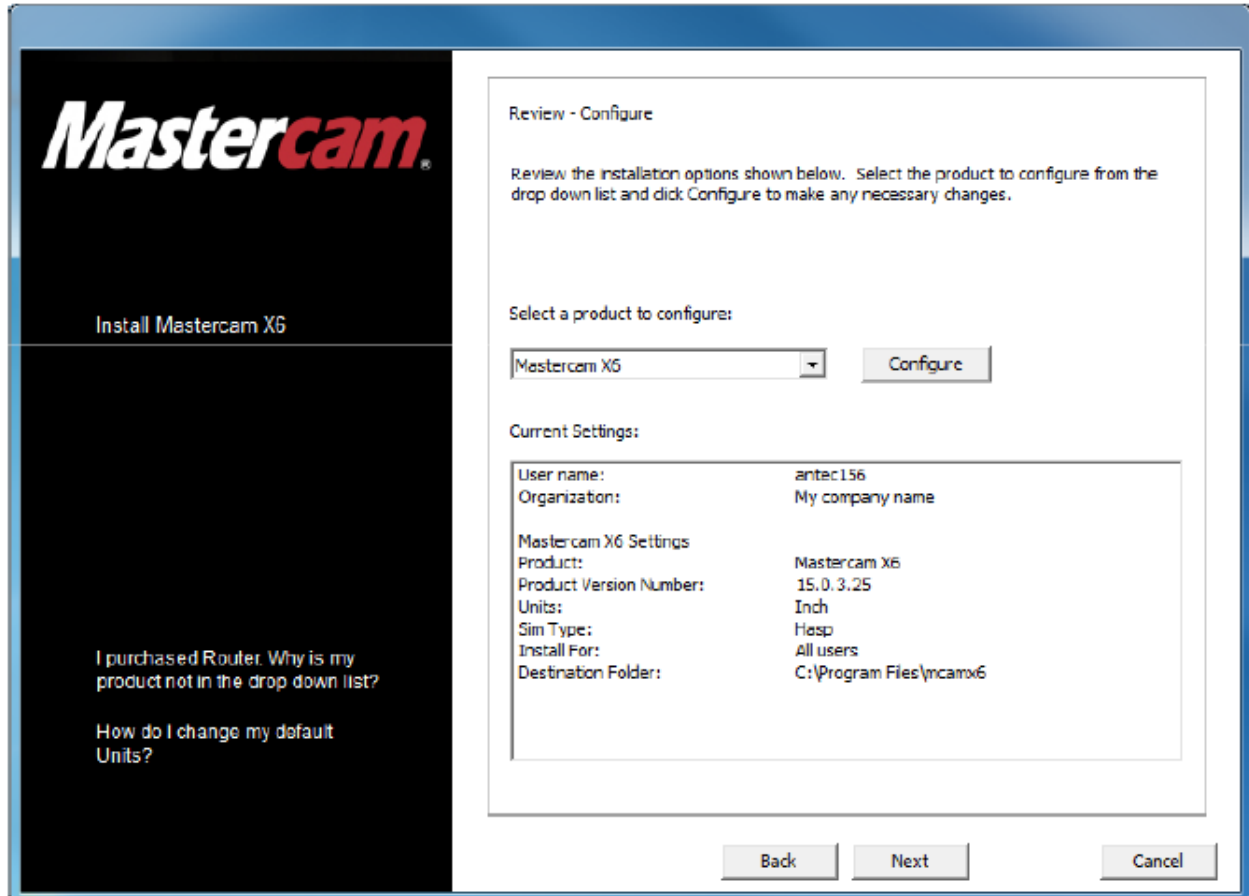
Inserting the DVD into your computers drive, the Installation dialog will launch.



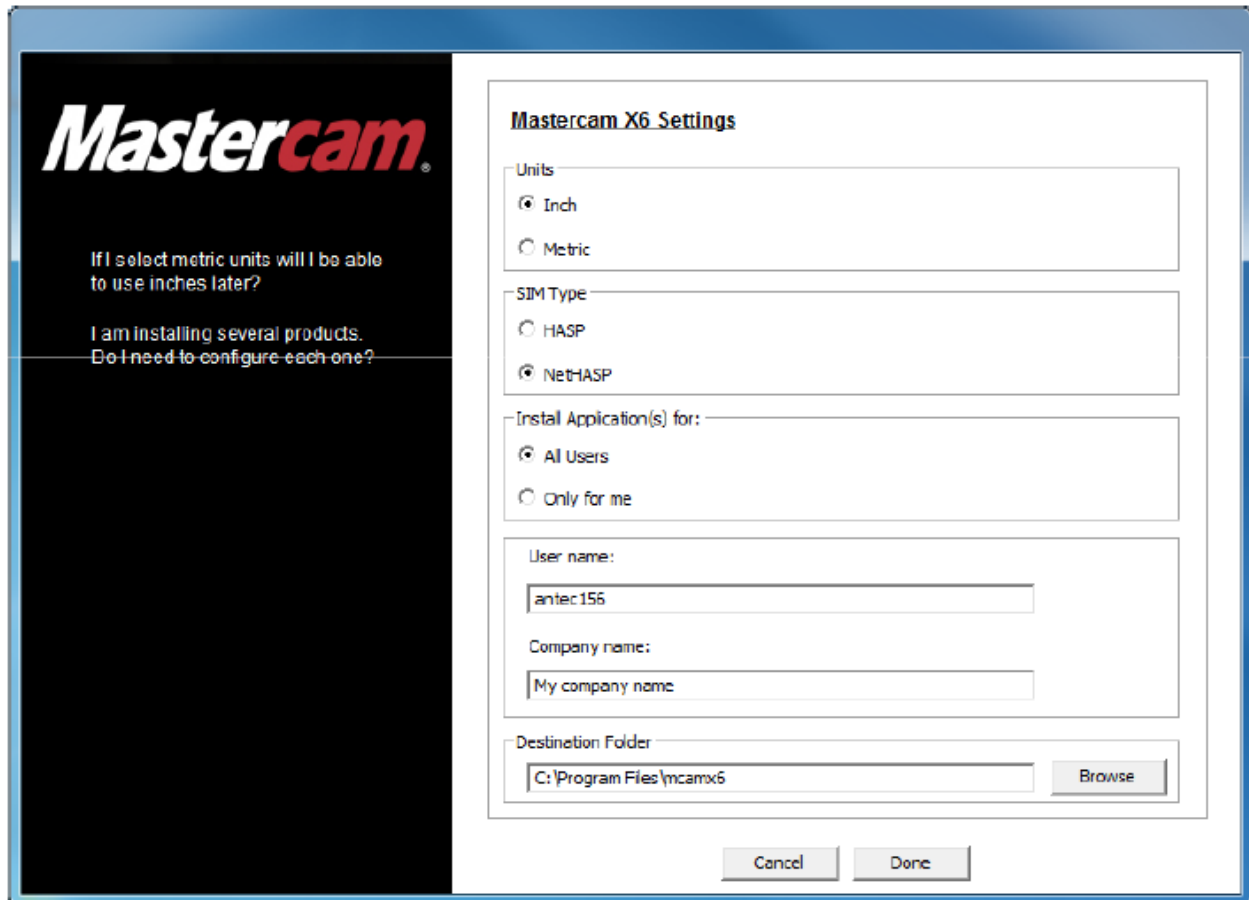
Installation choices are chosen. If options are required later, running the setup will allow the user to choose to install other options.



The current installation settings are shown. To change them, click the Configure Button.



Available settings Changes here once accepted, will update on the previous screen.



Mastercam

If I select metric units will I be able to use inches later?

I am installing several products. Do I need to configure each one?

Mastercam X6 Settings

Units

Inch

Metric

SIM Type

HASP

Net-HASP

Install Application(s) for:

All Users

Only for me

User name:

antec156

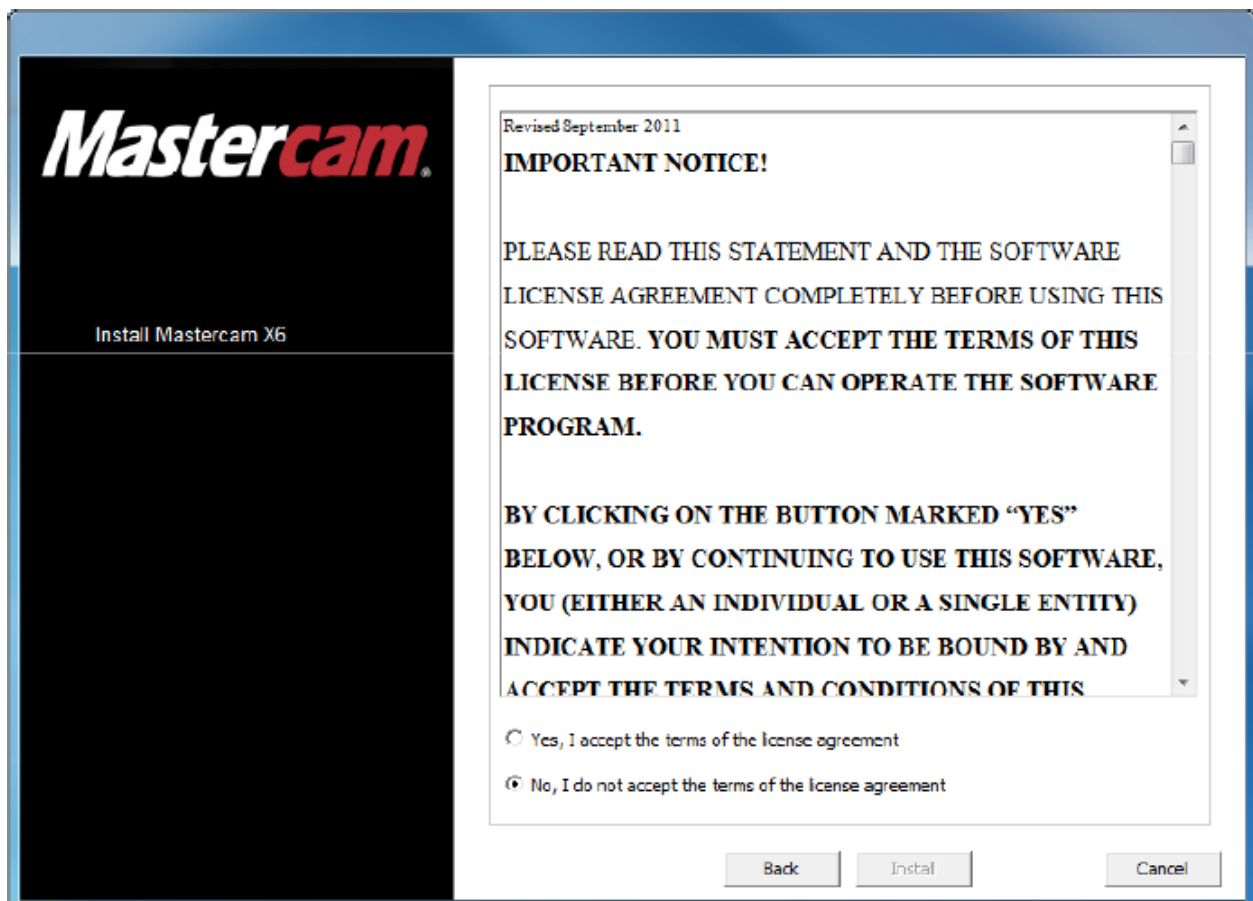
Company name:

My company name

Destination Folder

C:\Program Files\mcamx6

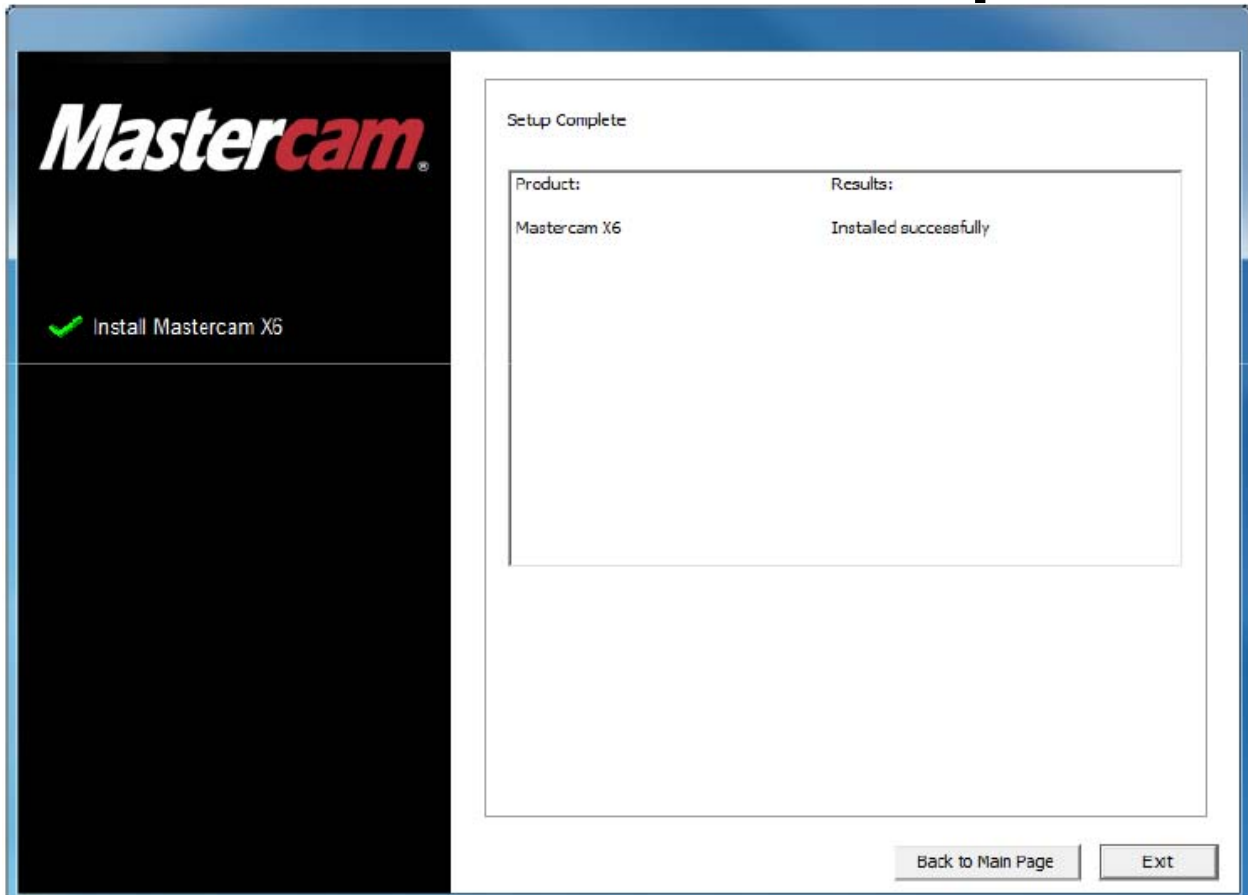
Acceptance of the license agreement. If the user clicks no, the software installation will end. You must accept the agreement for the installation to be completed.



Settings and License Agreement Once completed and accepted, the installation begins.



Installation – Complete



Select Exit to complete the installation.

Migration

Can I use the X6 Migration Utility?

If you are migrating your settings from X5 to X6, yes you can use the Migration Utility. If you are updating from a version before X5, no, the migration utility will not be applicable.

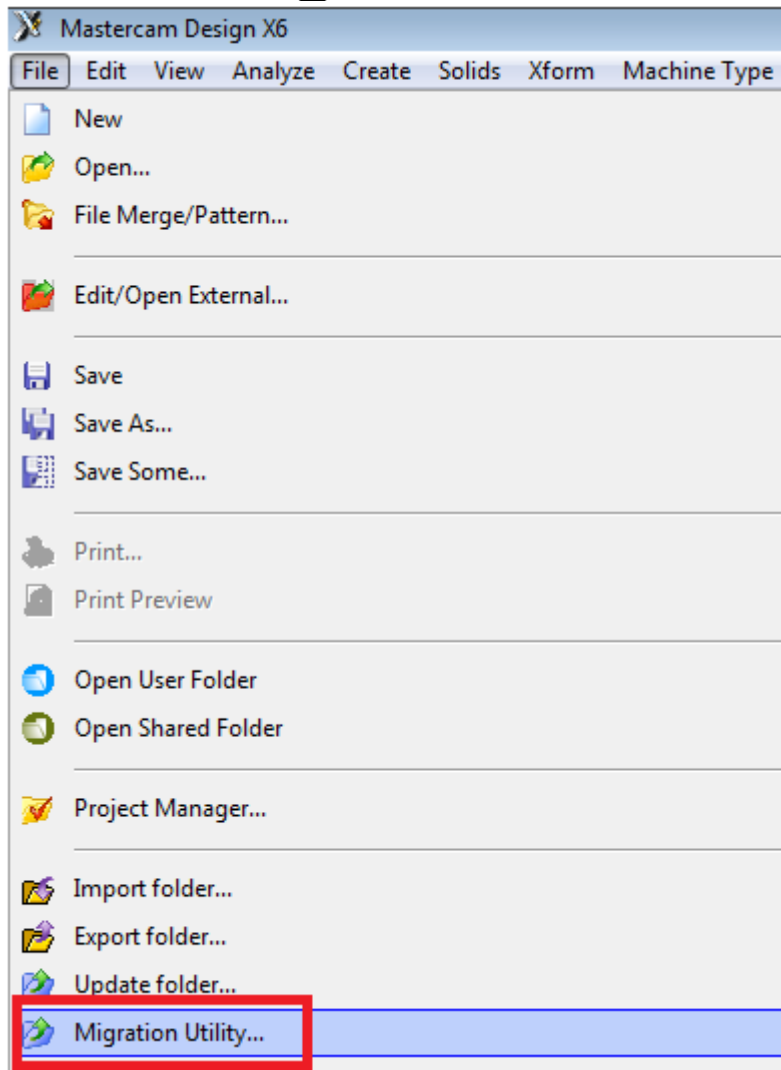
Previous versions users will need to use the Update Folder for files, the configuration file from anything previous to X5 should NOT be updated.

Will the Migration Utility also update all of my other files?

Yes it will. There are some major pitfalls to consider though. Using this method to update all files in the shared folder will result in many X6 files being overwritten with X5 versions. In many cases, this will not be the desired result.

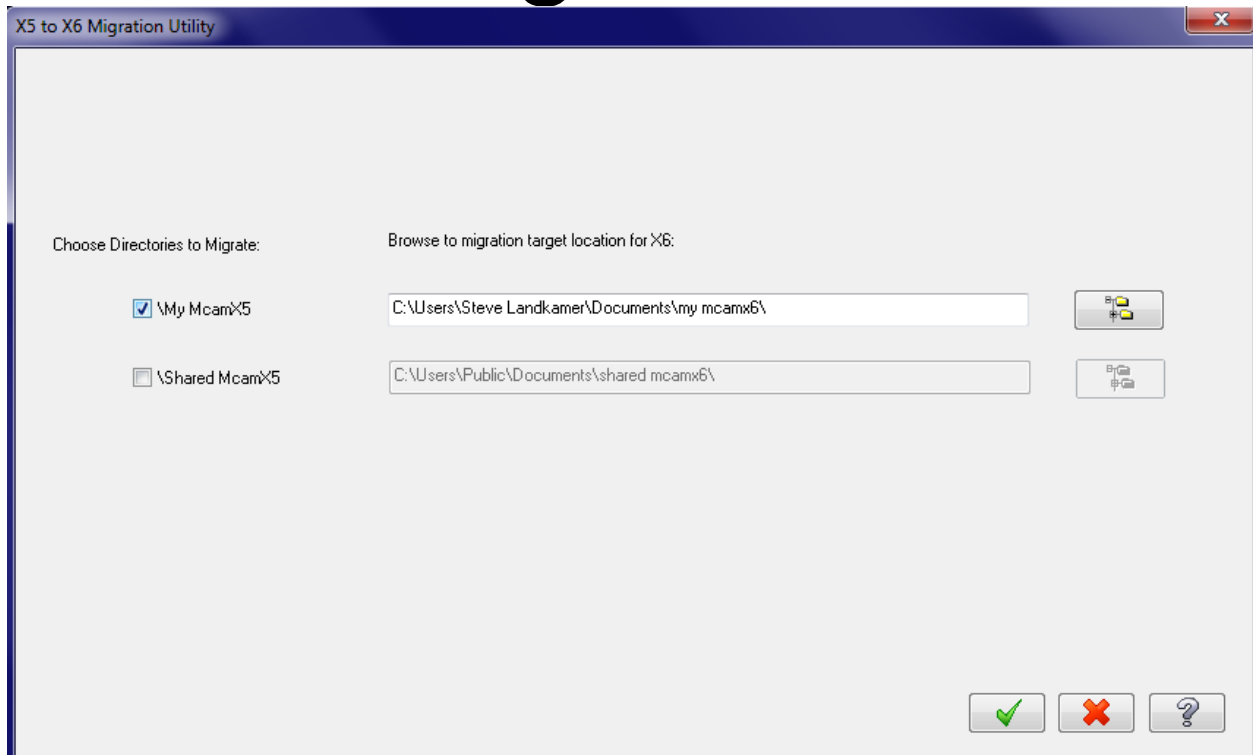
An alternative method of updating these files is recommended and is detailed in the Updating section of this document.

Migration



To migrate the user configuration settings from X5 to X6, the Migration Utility can be used. Located under the File menu.

Migration



We recommend that only the first option be selected, the second option is left unchecked.

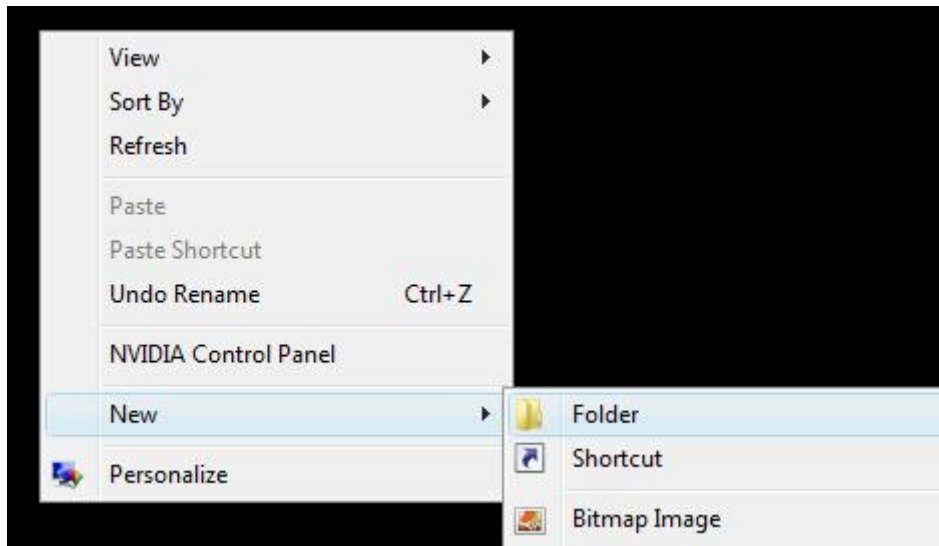
Click the Green check to complete the action.

After running the utility, restart Mastercam to pick up the configuration settings. You may encounter some errors regarding missing files that have not been updated yet.

Updating

Updating your Machine Definition, Control Definition, Post Processor, Tool Libraries, Operations Defaults, Operation Libraries, Power Libraries, etc.

Create a Folder on your Desktop; Right click on your Desktop name the folder Temp or X5 to X6. The name however doesn't matter as long as it is remembered.

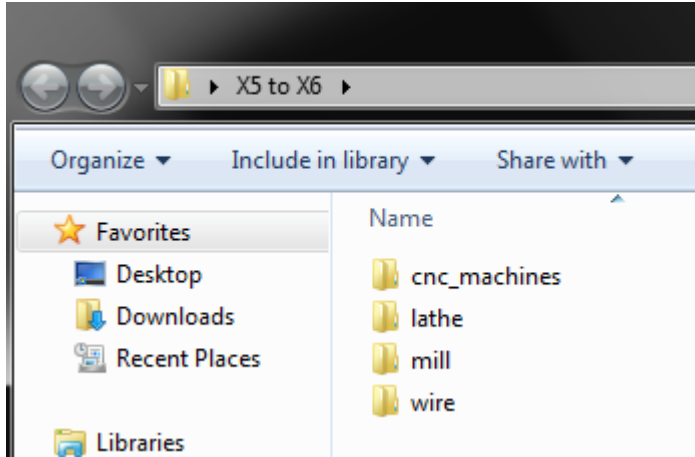


The new folder is shown below:



Double click to open your new Temp/X5 to X6 folder and Right click inside of the Temp/X5 to X6 folder. You'll need to create the directory structure exactly as it is in the Shared Mastercam directories.

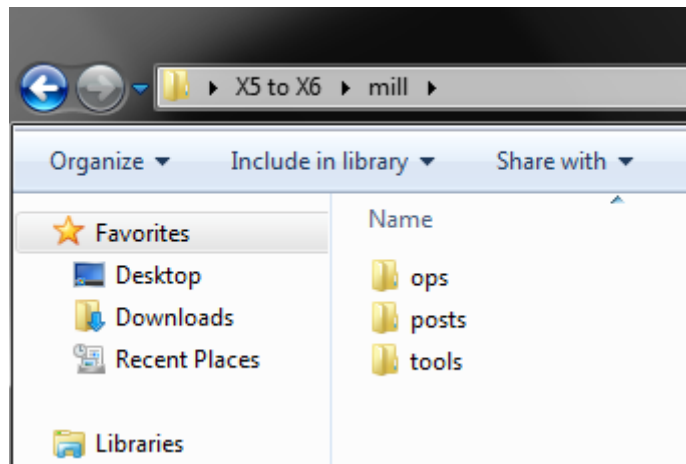
Only create the ones needed. If you do not own Lathe or Wire, it is not needed.



Double click to open the product folder, i.e. Mill, Lathe, Router or Wire.

Right click inside of that folder and select "New Folder". You'll need to create the directory structure exactly as it is in the Shared Mastercam directories.

In this Mill example, the ops, posts and tools folders will be created. This will allow the update of the Operation Defaults, Post Processor and Tool Libraries. As these are the only files being updated, these are the only folders necessary.



Typical file locations in Windows 7 & Vista:

Machine Definitions:

C:\Users\Public\Documents\shared mcamx5\CNC_MACHINES

Post Processors:

C:\Users\Public\Documents\shared mcamx5\Product\posts

Tool Libraries:

C:\Users\Public\Documents\shared mcamx5\Product\tools

Operation Defaults & Libraries:

C:\Users\Public\Documents\shared mcamx5\Product\ops

Product = Mill, Lathe, Router or Wire

Typical file locations in Windows XP:

Machine Definitions:

C:\Documents and Settings\All Users\Shared Documents\shared mcamx5\CNC_MACHINES

Post Processors:

C:\Documents and Settings\All Users\Shared Documents\shared \shared mcamx5\Product\posts

Tool Libraries:

C:\Documents and Settings\All Users\Shared Documents\shared \shared mcamx5\Product\tools

Operation Defaults & Libraries:

C:\Documents and Settings\All Users\Shared Documents\shared \shared mcamx5\Product\ops

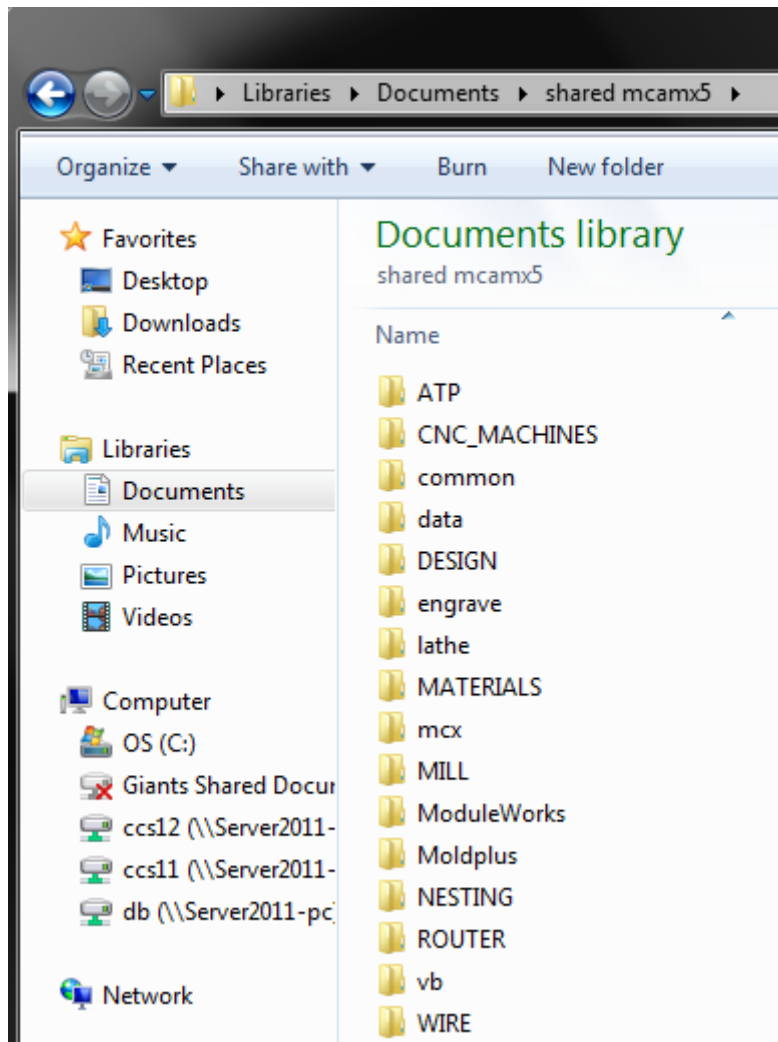
Product = Mill, Lathe, Router or Wire

Copying files from the cnc_machines and product folders, i.e. Mill, Lathe, Router or Wire.

Now, copy the desired files out of the Mastercam X structure and place them in the Desktop folder in their corresponding locations.

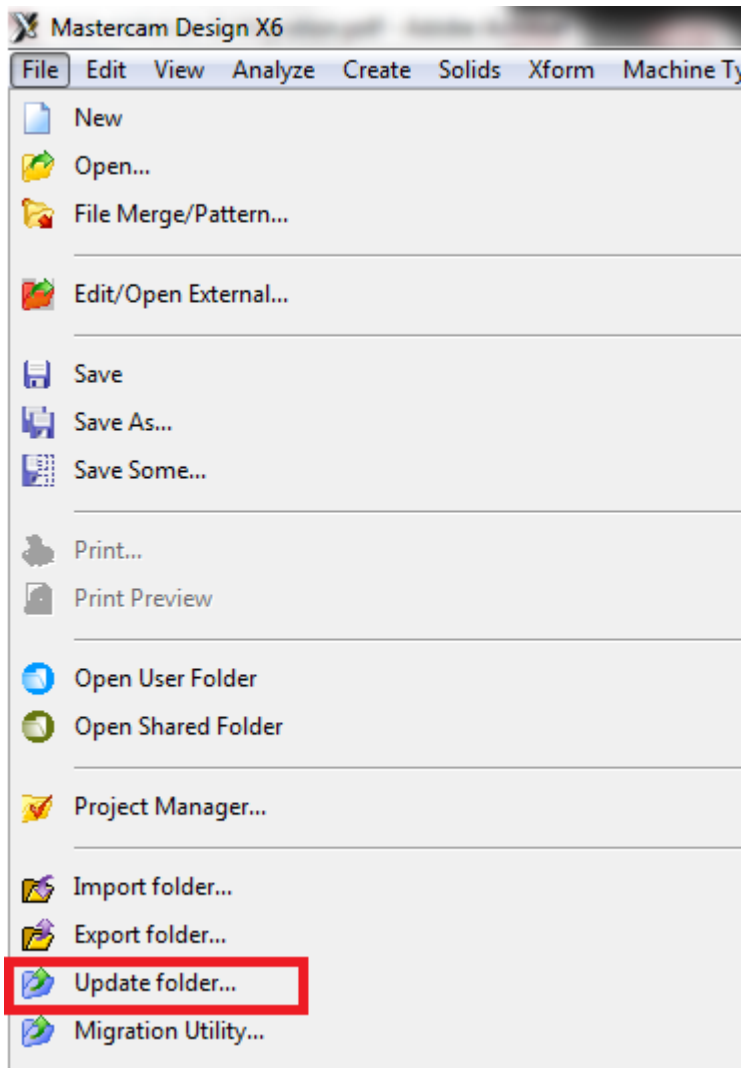
Files from mill/posts should be copied to mill/posts.

Files from cnc_machines, should be copied to cnc_machines. Etc....



By taking the extra few minutes to create our folders properly and copying only the files the user wants to move from X5 to X6, a clean update can now happen. This only updates the files the user wishes to carry over from the previous version.

To begin the update process in X6, click on the “File” menu and select “Update folder”.



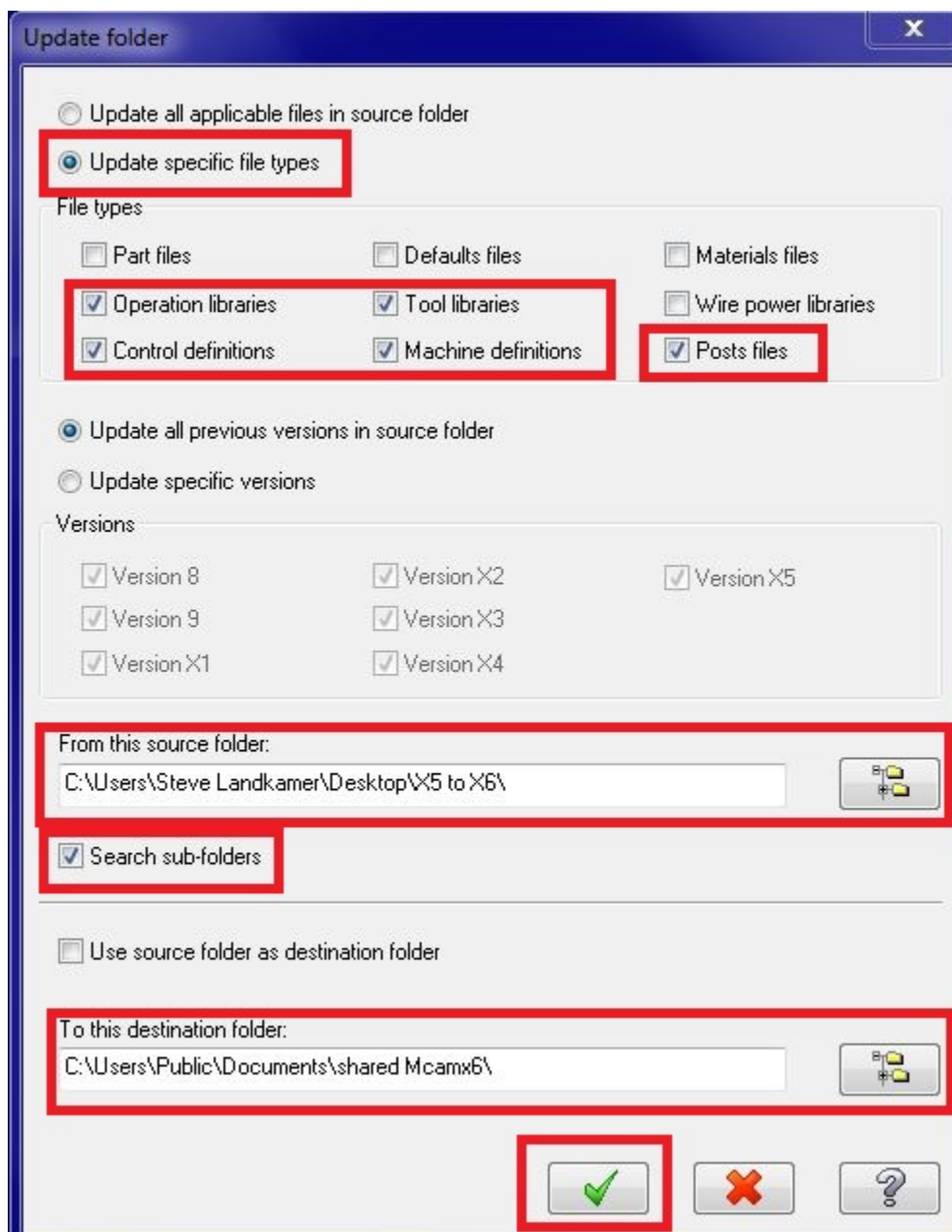
The Update Folder Process:

The user can choose ONLY the file types that they want to update.

You will want to set the Source Folder location. Update this field to your Temp/X5 to X6 folder you created on the desktop.

Select the Search sub-folders check box to allow all of the sub-folders to be processed as well.

After setting the Source Folder, the destination folder will know the default X6 location, if not set to the shared Mcamx6 folder, this should be checked and set. Clicking the Green Check will begin the process of updating the files in the folders and updating the post processors at the same time.



Using the Installation, Migration and Update process as described will provide the cleanest, most reliable process of updating your files.

We feel that by taking a few extra minutes up front, users can return and remain productive, faster and with greater reliability.

Getting a good clean update is the best way to maintain and continued reliability. Using this process has shown itself to be reliable.